

SOFTWARE FOR MACHINE VISION

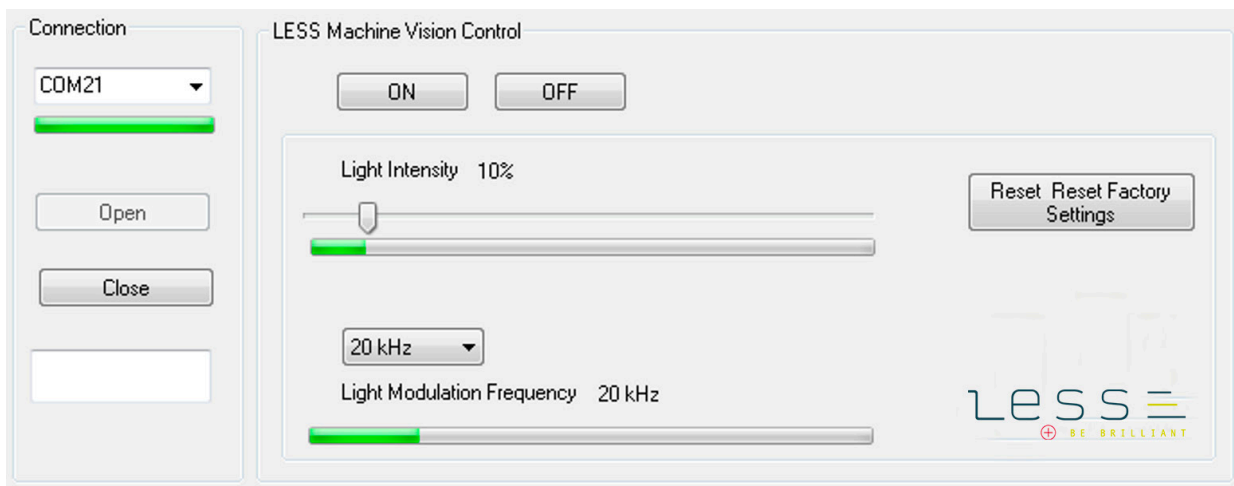
MBF-20-5400
MDF-20-5400



USER MANUAL

STEP BY STEP INSTALLATION

1. Install the Microcontroller Driver for Serial Communication
 - For 32bits system install STM(x86) or for 64bits system install STM(x64)
2. Connect the USB cable to the computer
3. Plug 9V power supply to the driver box
 - The illuminatin system switches on to its factory settings and the computer recognizes the USB connection.
4. Launch DriverLESS.exe



5. Select the correct COM port in the upper left window

6. Click on « Open »

7. The software now allows the direct control of the illumination system. The illumination system can be turn ON or OFF. The light intensity can be tuned from 0 to 100%. The light modulation frequency can be changed to 5 preset values (1 kHz, 10 kHz, 20 kHz, 50 kHz and 100 kHz).

8. Once the correct settings have been chosen, click on «Close». The illumination system can now be disconnected to the computer and switched off. These last chosen settings will be saved and the illumination system will switch on with these last settings.

L.E.S.S. SA

Av. de Longemalle 13

CH-1020 Renens, Switzerland

Tel : +41 21 552 07 10

info@less-sa.com

www.less-sa.com

LESS 
 BE BRILLIANT